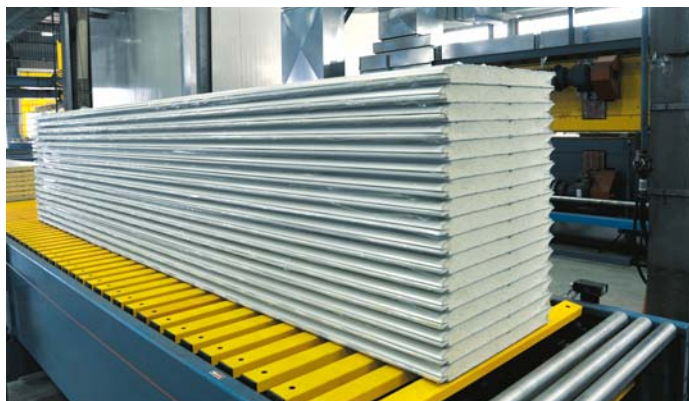
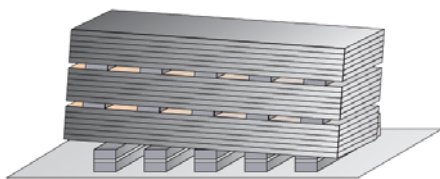


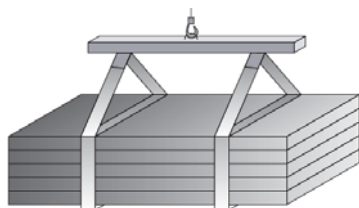
STORAGE AND HANDLING INDICATIONS



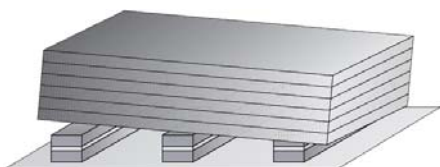
In case you have to store a maximum of **3 packages** one on top of the other, then the number of supports, made of suitable materials has to be increased.



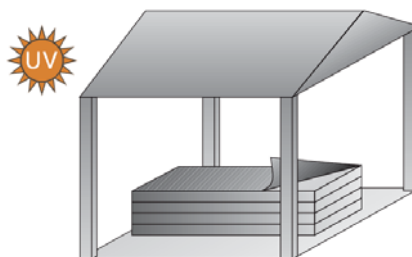
When unloading and fitting, use suitable balancing elements and sling the packs one at a time with hemp or similar slings at least **150 mm wide**: place suitably long rigid planks on the top and underneath the packs - to prevent crushing the pack sideways.



Store the panels or steel with a **minimum slope of 4%** in order to avoid possible water from stagnations.



Panels should be stored in a covered area which offers the best conditions. Should it not be possible, suitable support should be put under the packages and the panels or steel should be then covered by waterproof canvasses which allow ventilation. Remove the adhesive protection before fitting and anyway at no later than **100 days** from the date of production.



Galvanised materials must be used in a very short period of time since they are particularly sensitive to humidity.